



Finland Street, London, SE16 7LA

Recently refurbished two double bedroom two bathroom apartment featuring generous terrace and balcony overlooking picturesque Greenland Dock. The property boasts a naturally bright living room leading into the private balcony, a generous bespoke kitchen leading into a massive terrace ideal for al-fresco-dining and to entertain guests, a spacious double bedroom en-suite with plenty of storage space, a generous master bedroom boasting a unique walk-in wardrobe and calming water views, and a stylish family bathroom. Canada Water and Surrey Quays stations with a plethora of restaurant, cafes and supermarket are within walking distance and just round the corner is the ecological park, making the property ideal for professionals and young families wanting to escape the hustle and bustle of the city without giving up the privilege to live in the heart of London.

Council Tax Band: E

- Recently Refurbished Apartment
- Massive Terrace plus Balcony Overlooking Dock
- Two Double Bedrooms
- Walk-in Wardrobe
- Contemporary Kitchen
- Overlooking Greenland Dock
- Tranquil Setting
- Moments from Canada Water Masterplan

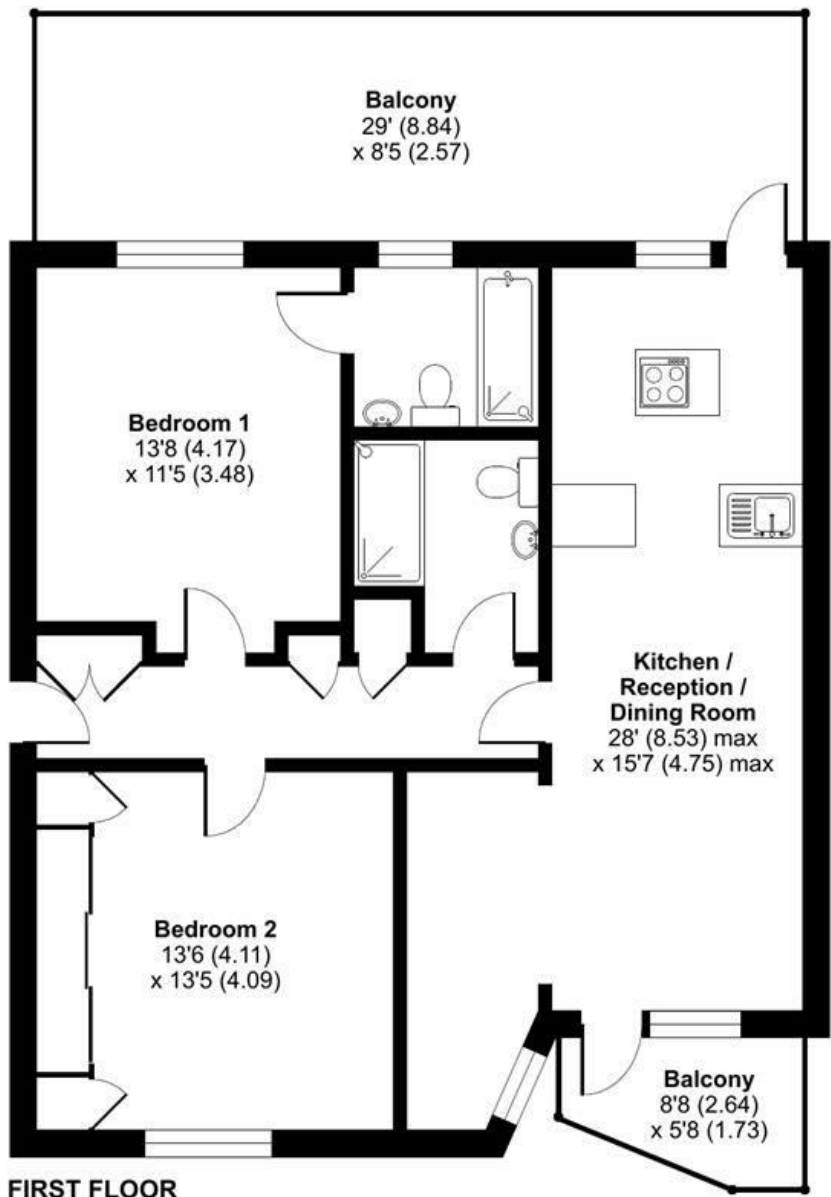
Alex & Matteo
ESTATE AGENTS

£2,400 Per month

Finland Street, London, SE16

Approximate Area = 893 sq ft / 83 sq m

For identification only - Not to scale



Alex & Matteo
ESTATE AGENTS



**Certified
Property
Measurer**

Floor plan produced in accordance with RICS Property Measurement Standards incorporating International Property Measurement Standards (IPMS2 Residential). © nitchcom 2023. Produced for Alex & Matteo Estate Agents. REF: 1068871

